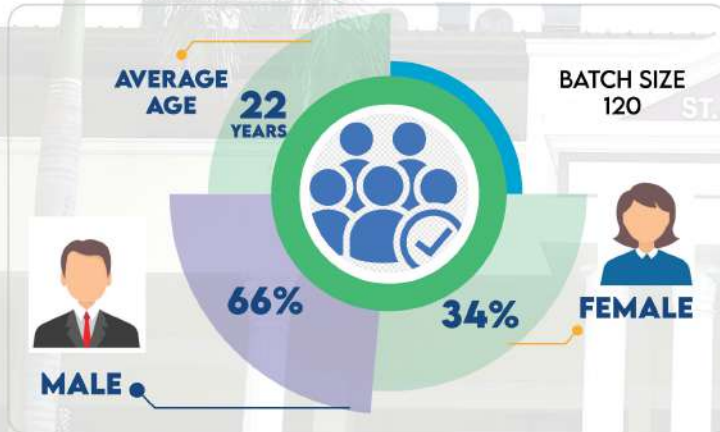




# INVITATION FOR THE FINAL PLACEMENT PROCESS

## BATCH XVI | 2022-2024

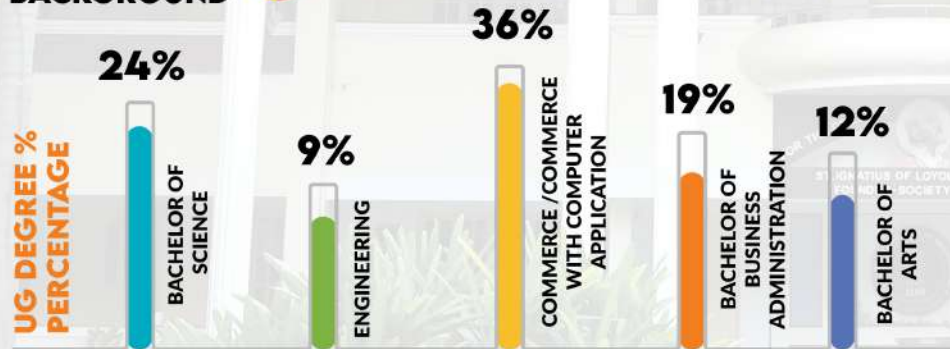


**Program Highlights :**

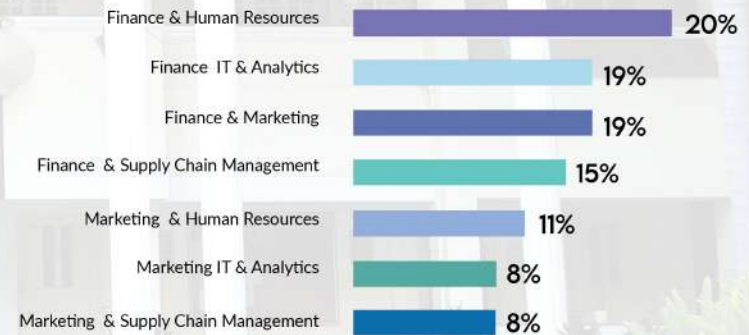
- Contemporary Syllabus
- Visiting Faculty from XLRI, NIT's, IIM's
- Case Based Pedagogy



### ACADEMIC BACKGROUND



### MBA | SPECIALIZATION DIVERSITY



### PLACEMENT 2021-2023 BATCH

Number of New Recruiters in the year 2023 **09**

### HIGHEST CTC 13.80 LACS | AVG. CTC | 5.85 LACS

Recruiters participated in Final Placements **40**

YoY Increase in CTC Avg: in Lacs **4.80 to 5.85**



OUR STUDENTS ARE WORKING WITH

